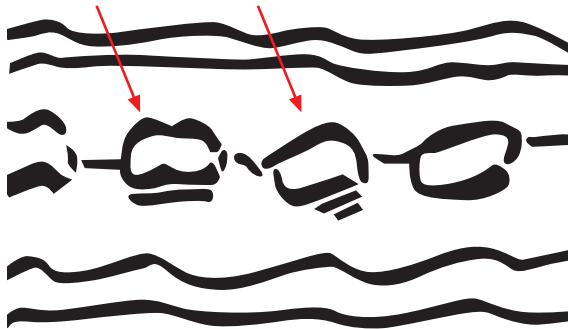
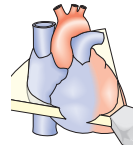
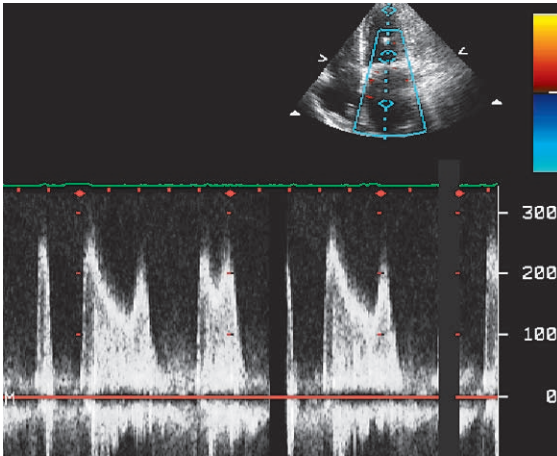


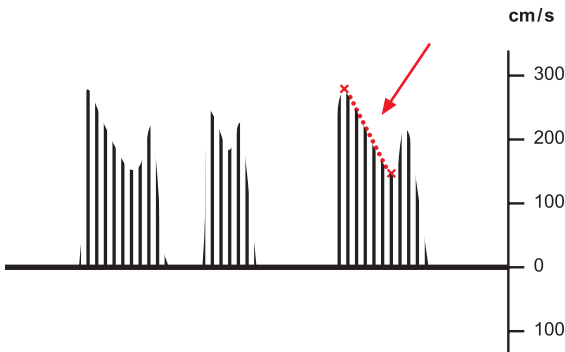
M-mode across the mitral valve shows decreased opening motion of both leaflets.



Limited opening motion is not a valid parameter for estimating degree of severity.



CW Doppler recording showing increased transmitral velocity as well as a flat decline in transmitral inflow.



Computer-assisted measurement of diastolic pressure gradient is used for quantification (so-called pressure half-time).

